

Organigramma Proposto

2022 - 2024

Aggiornamento 2023

713 - ASST DELLA VALTELLINA E DELL ALTO LARIO

Sistema Socio Sanitario



Regione
Lombardia

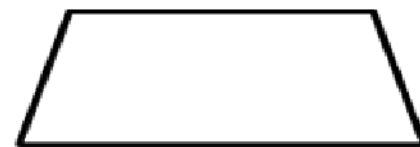
Legenda



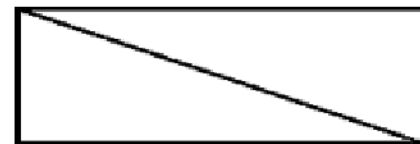
Dipartimento Gestionale



Dipartimento Funzionale



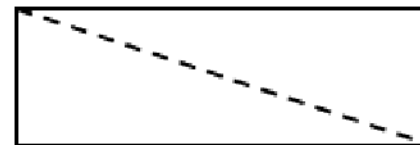
SC – Struttura Complessa



SSD – Struttura Semplice Dipartimentale



SS – Struttura Semplice



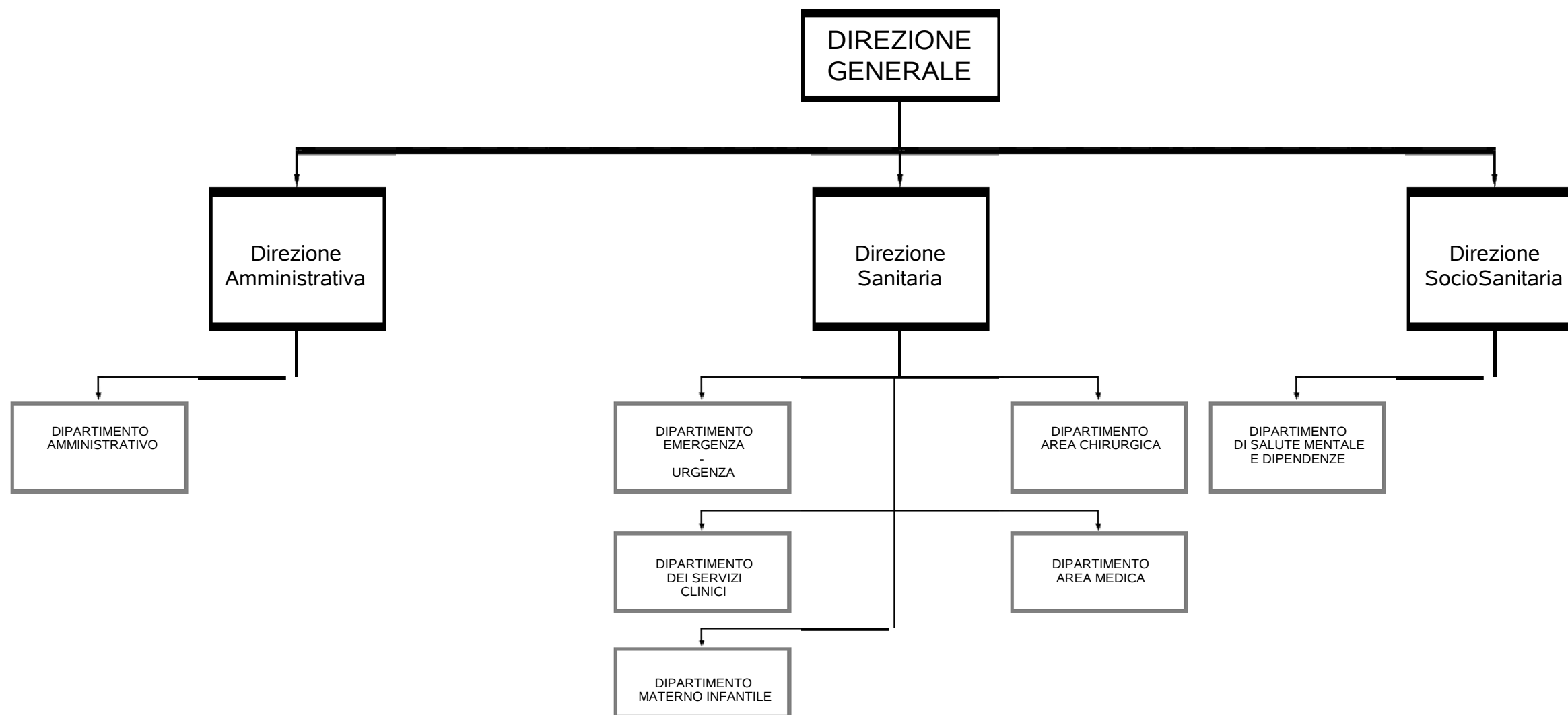
SD – Struttura Semplice Distrettuale

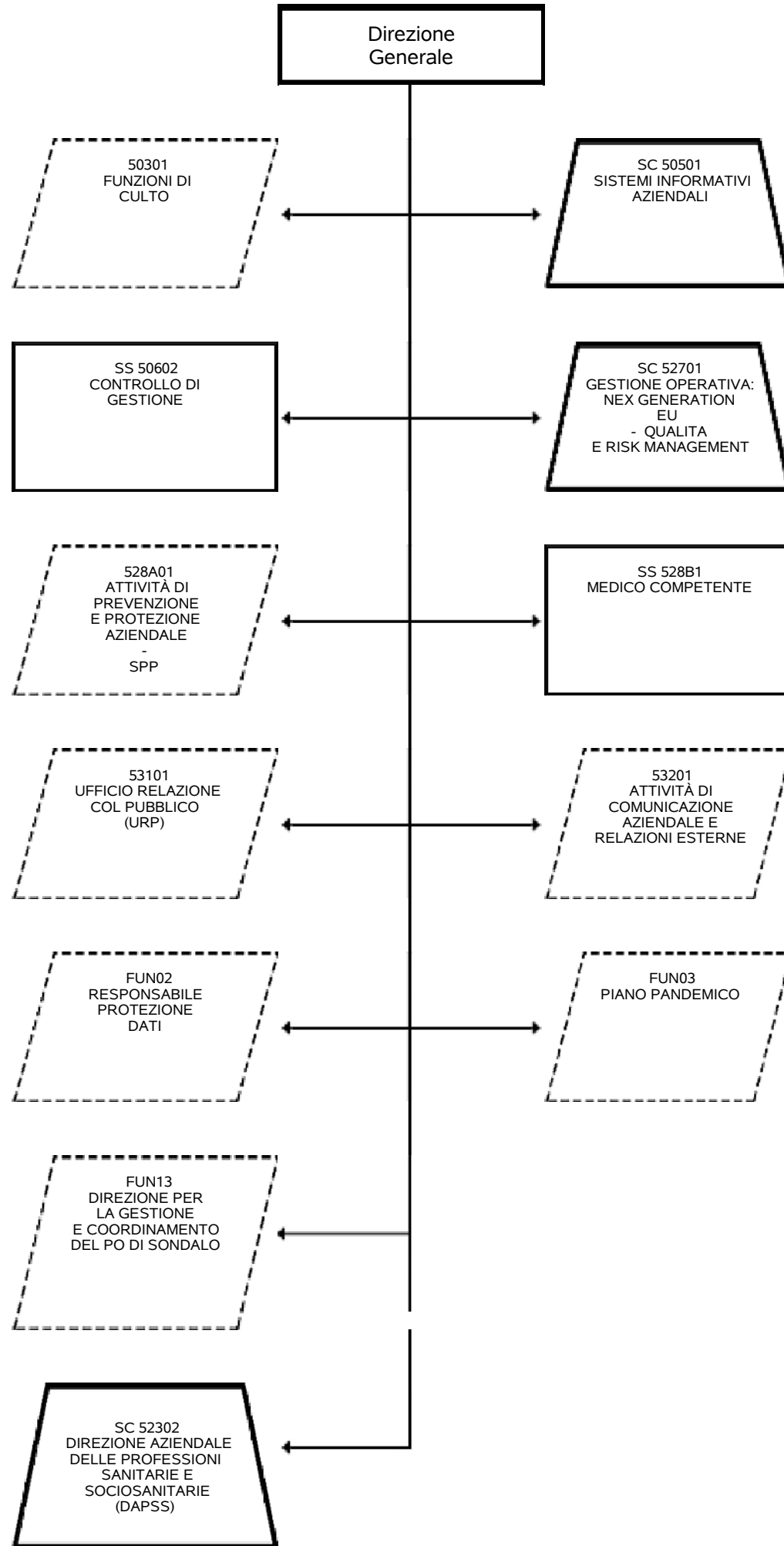


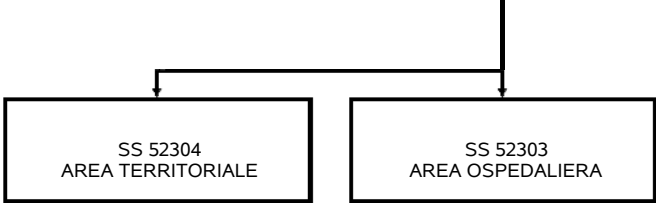
Funzione

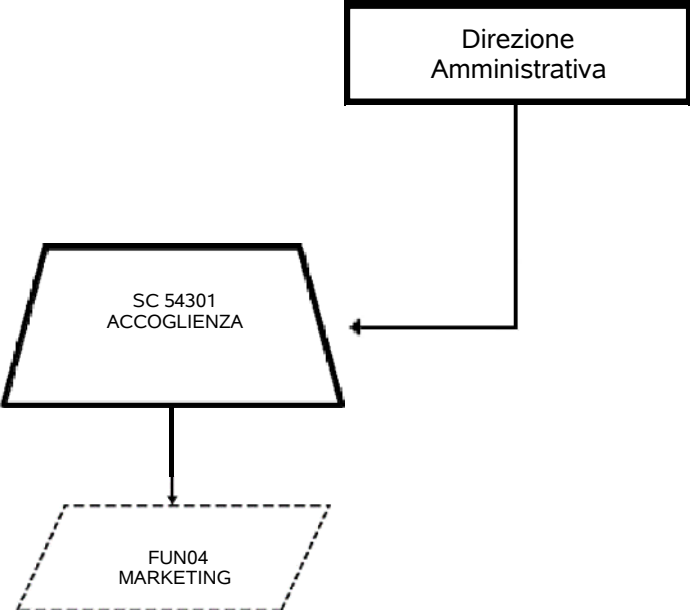


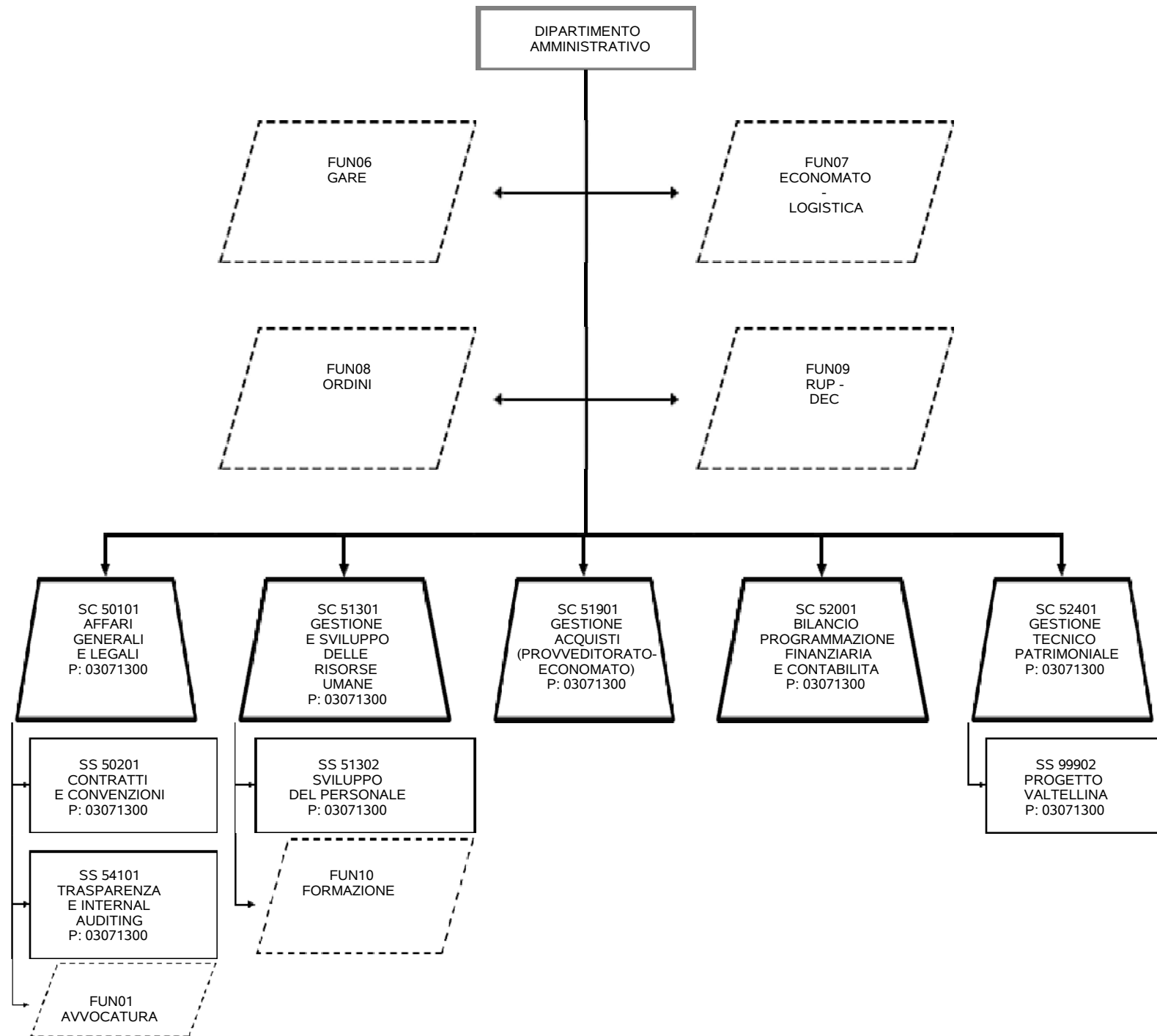
Relazione Funzionale

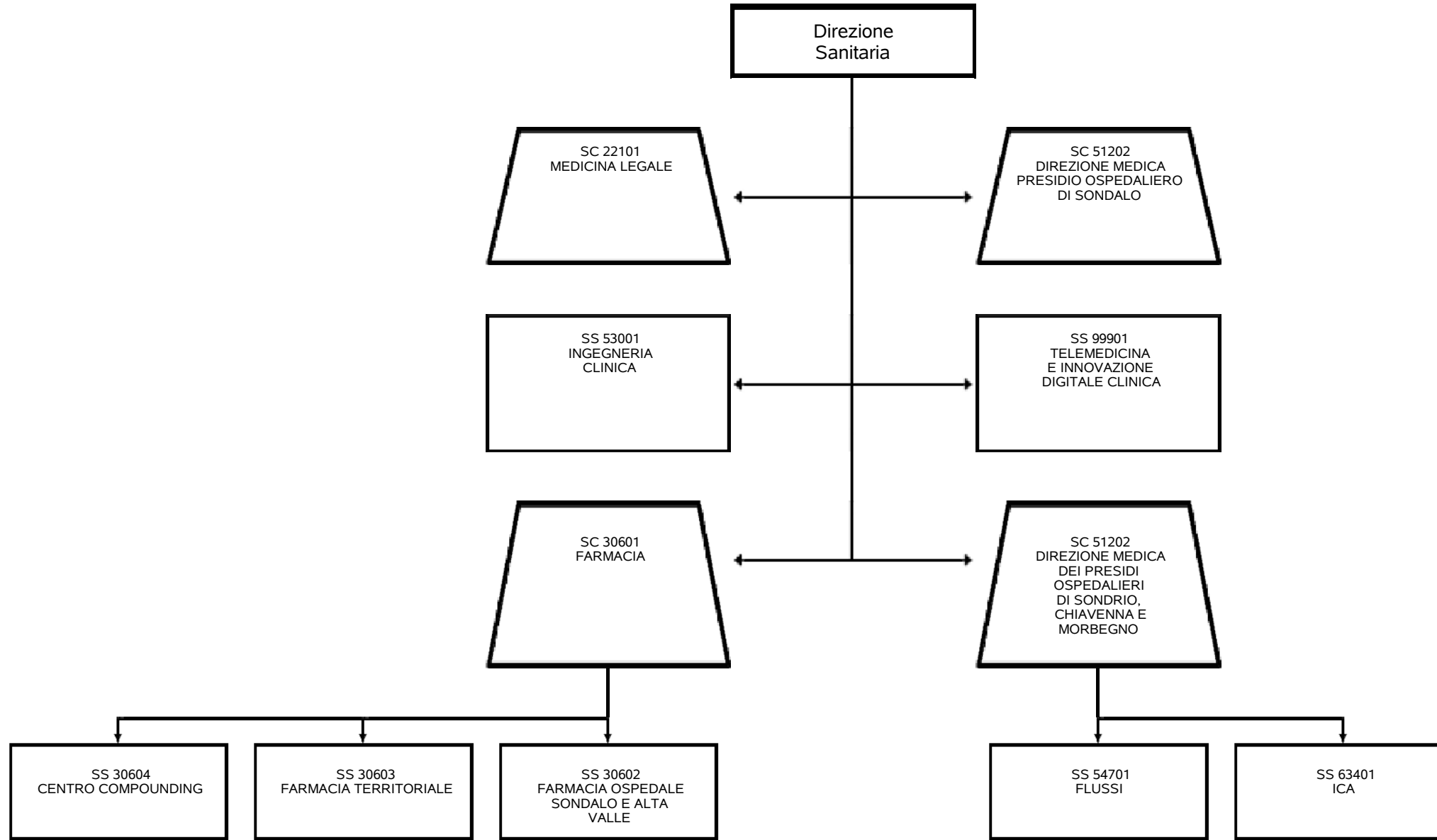


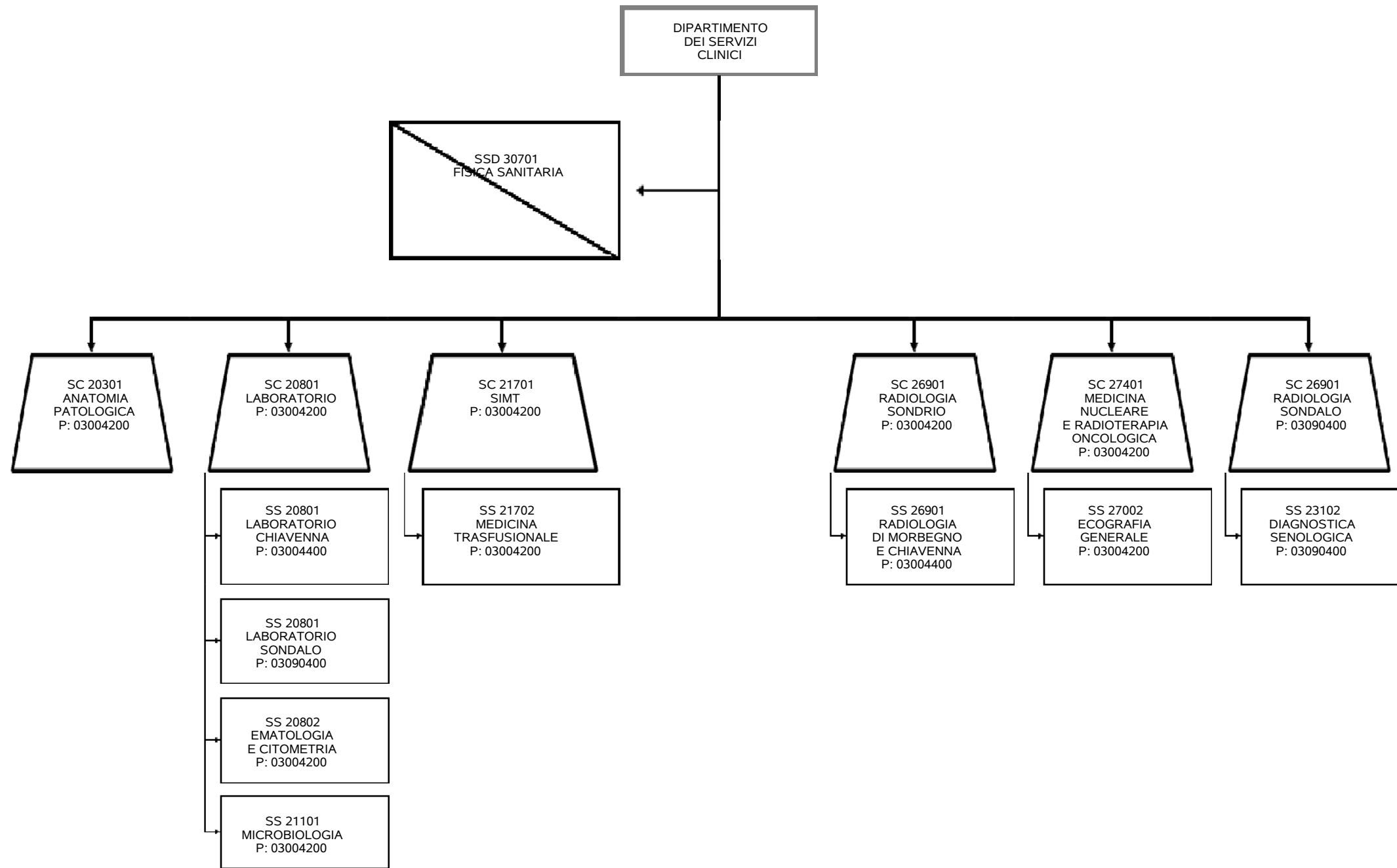


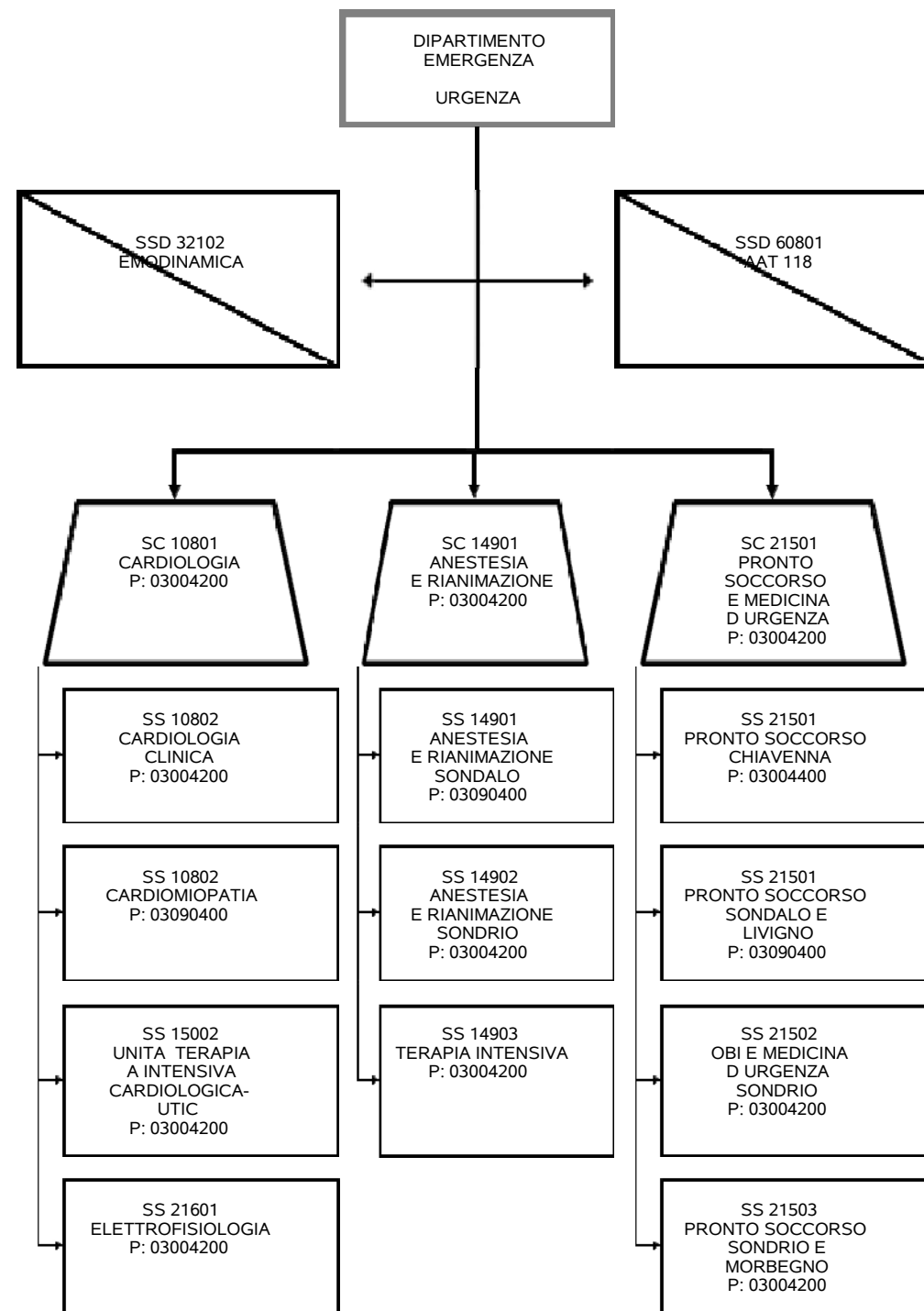


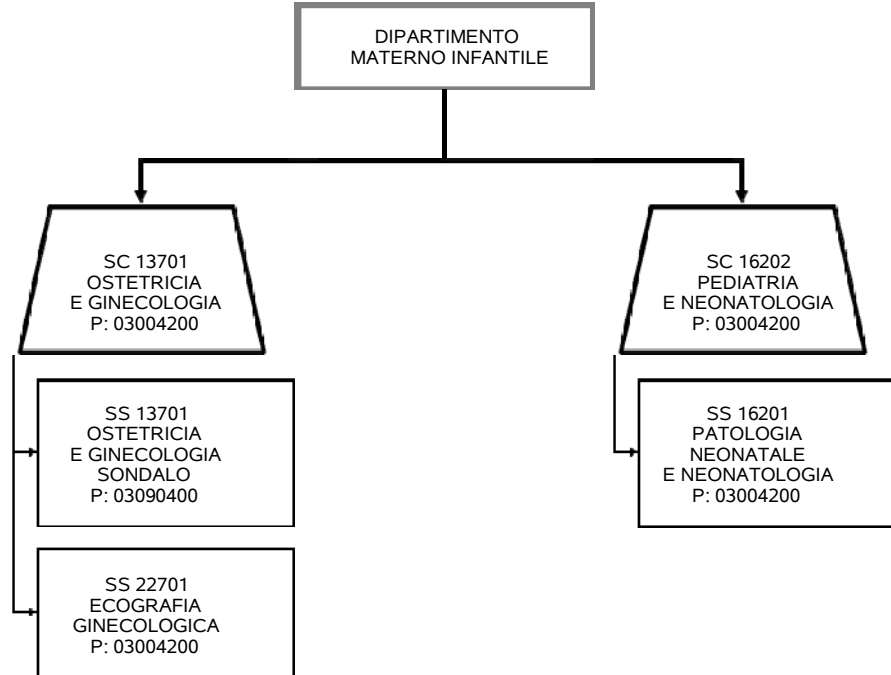


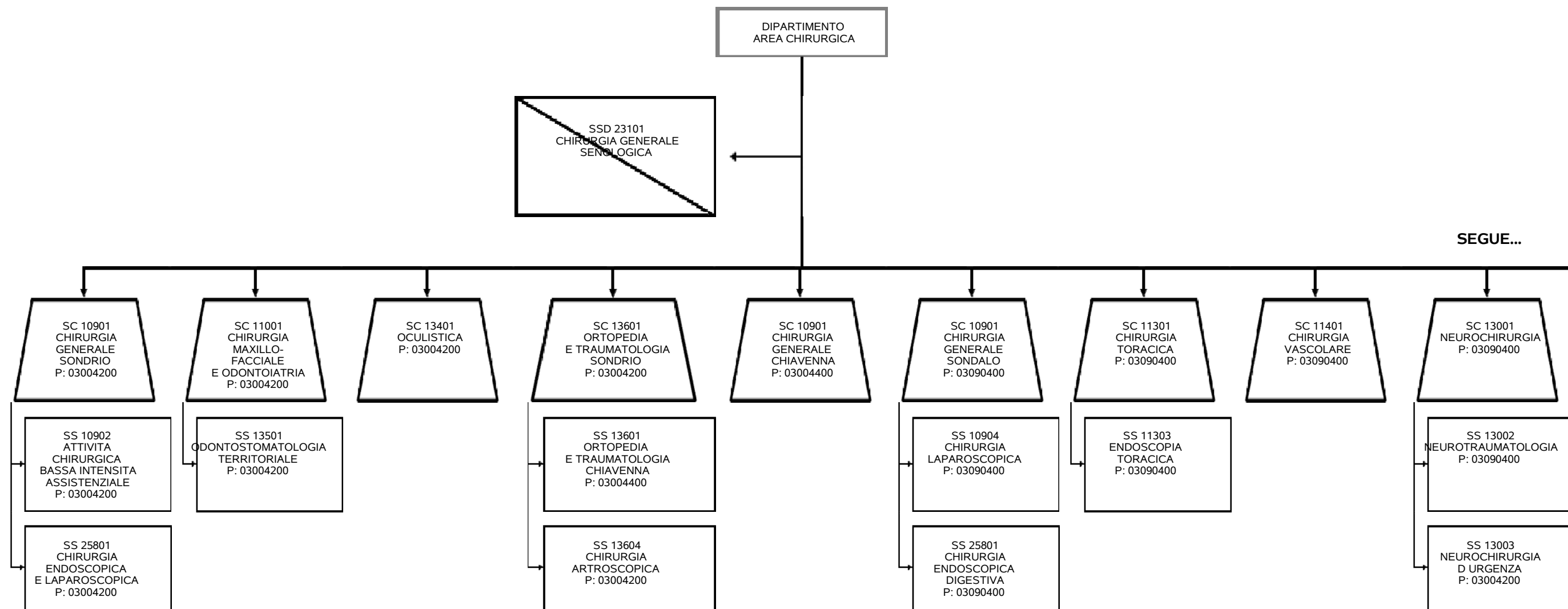


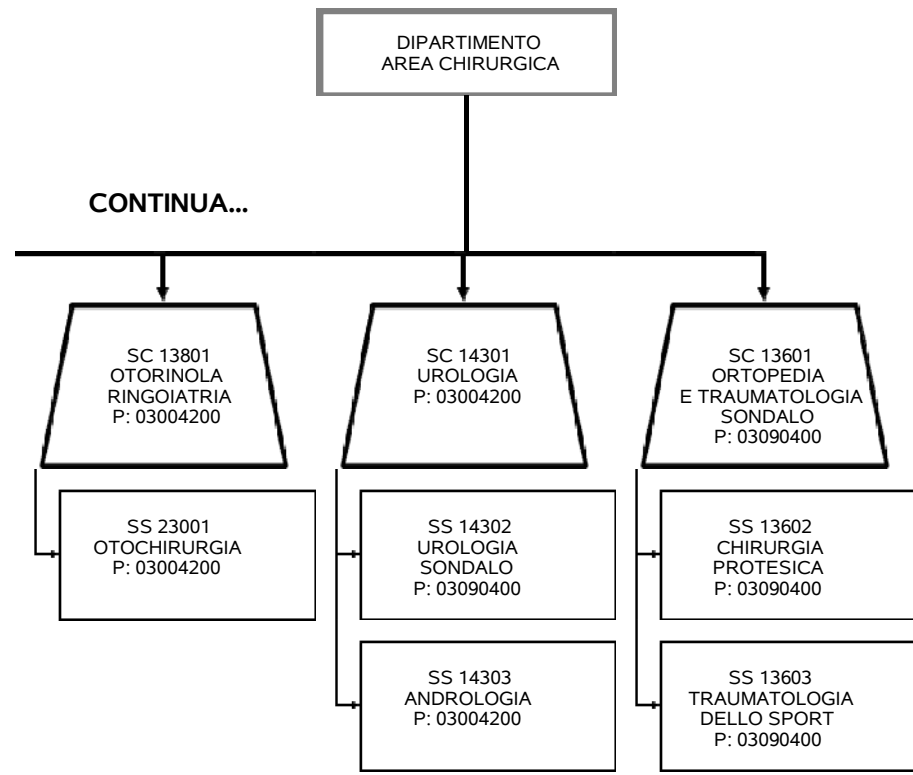


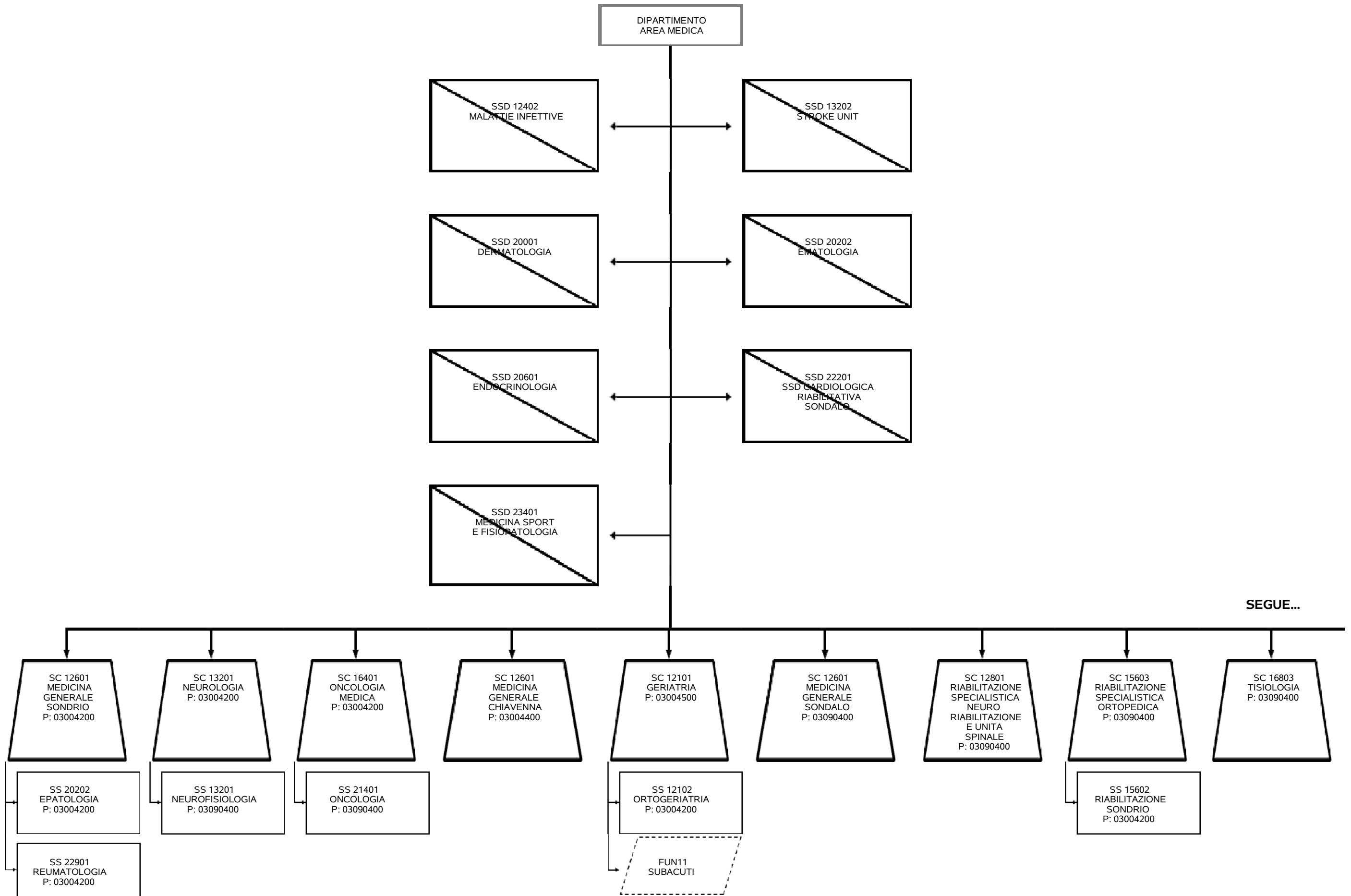


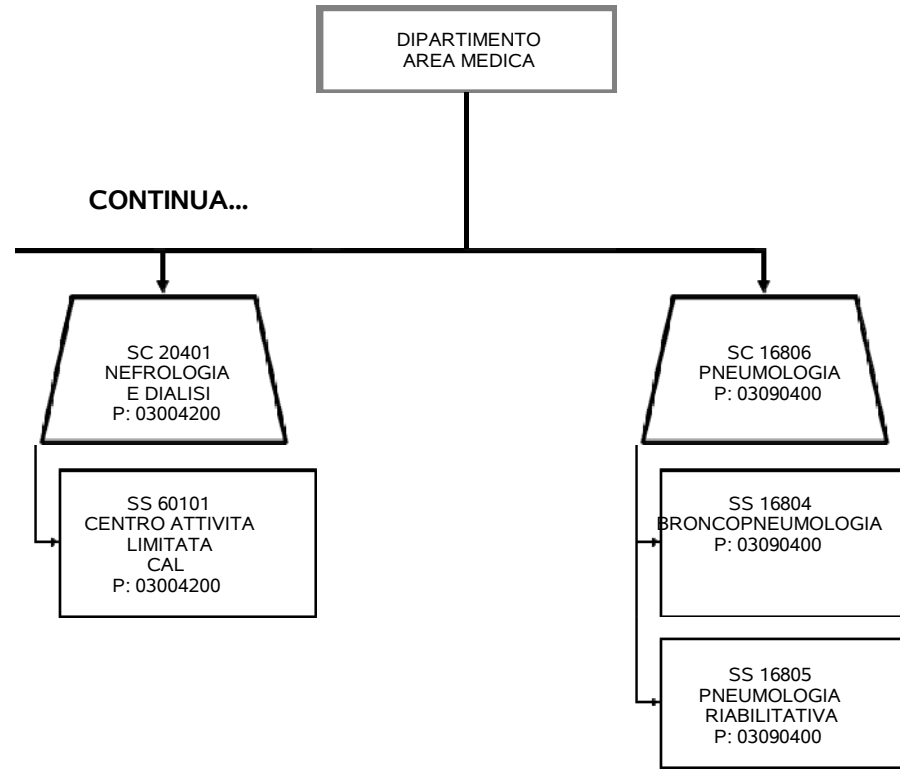


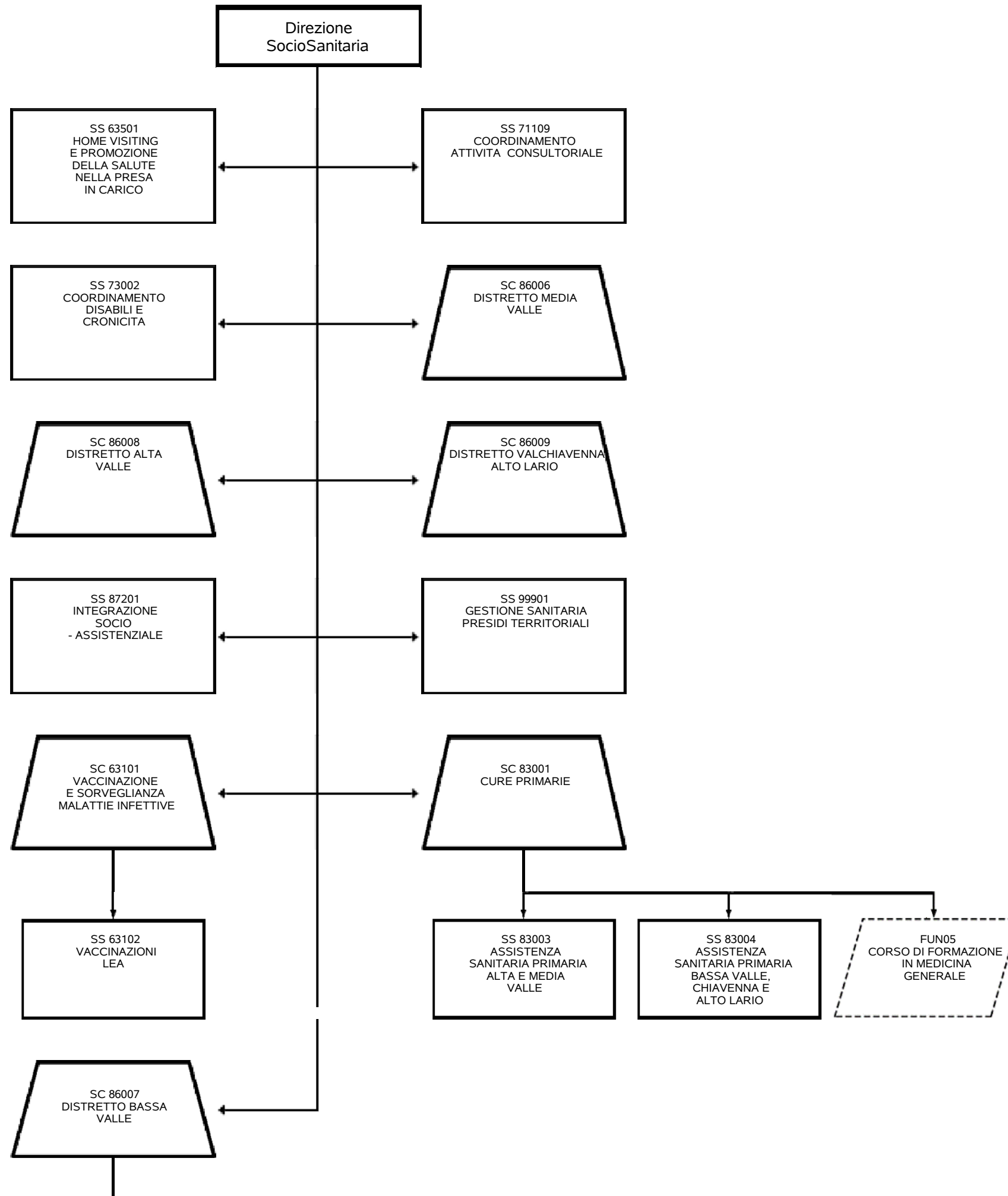


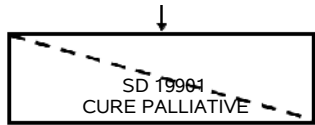


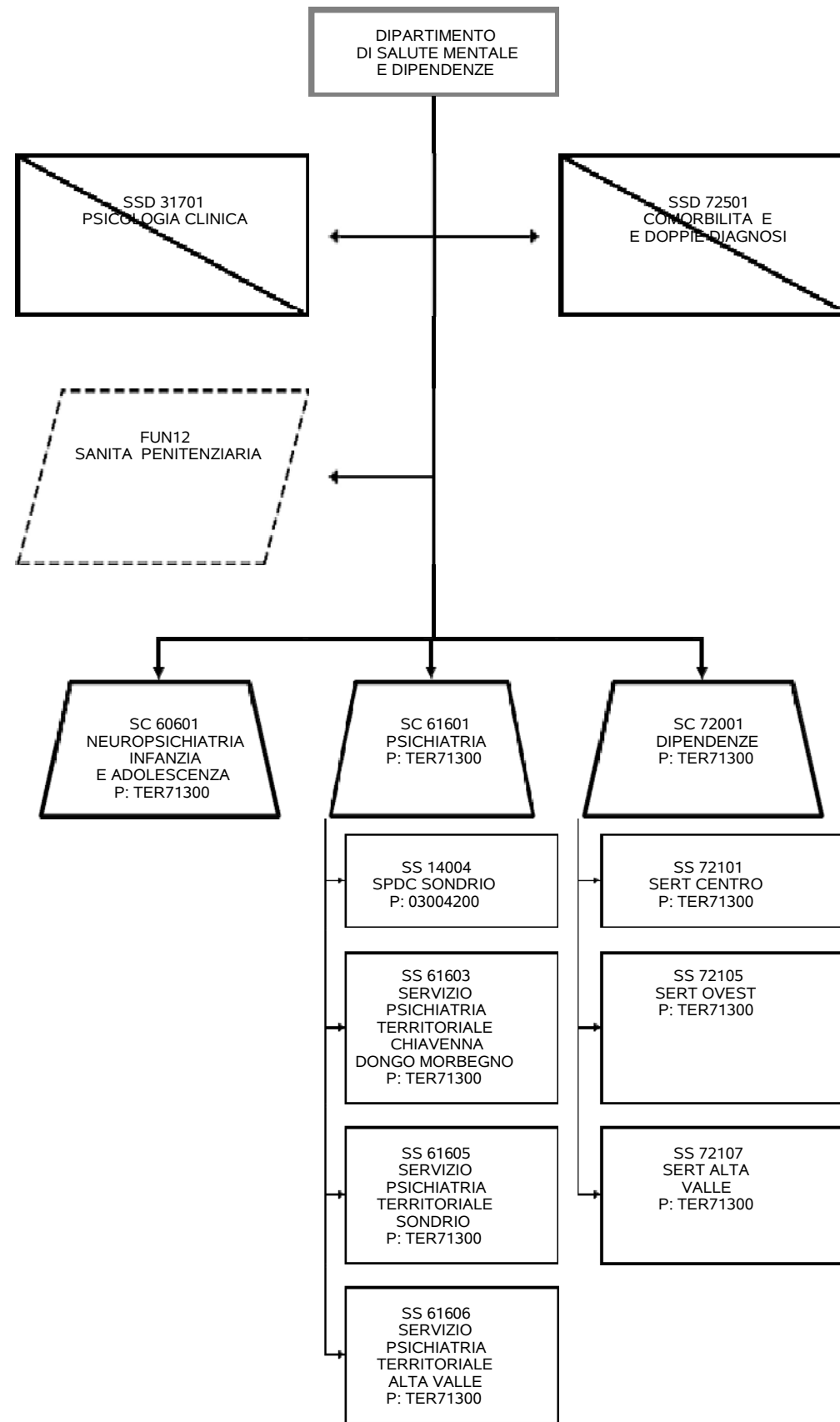


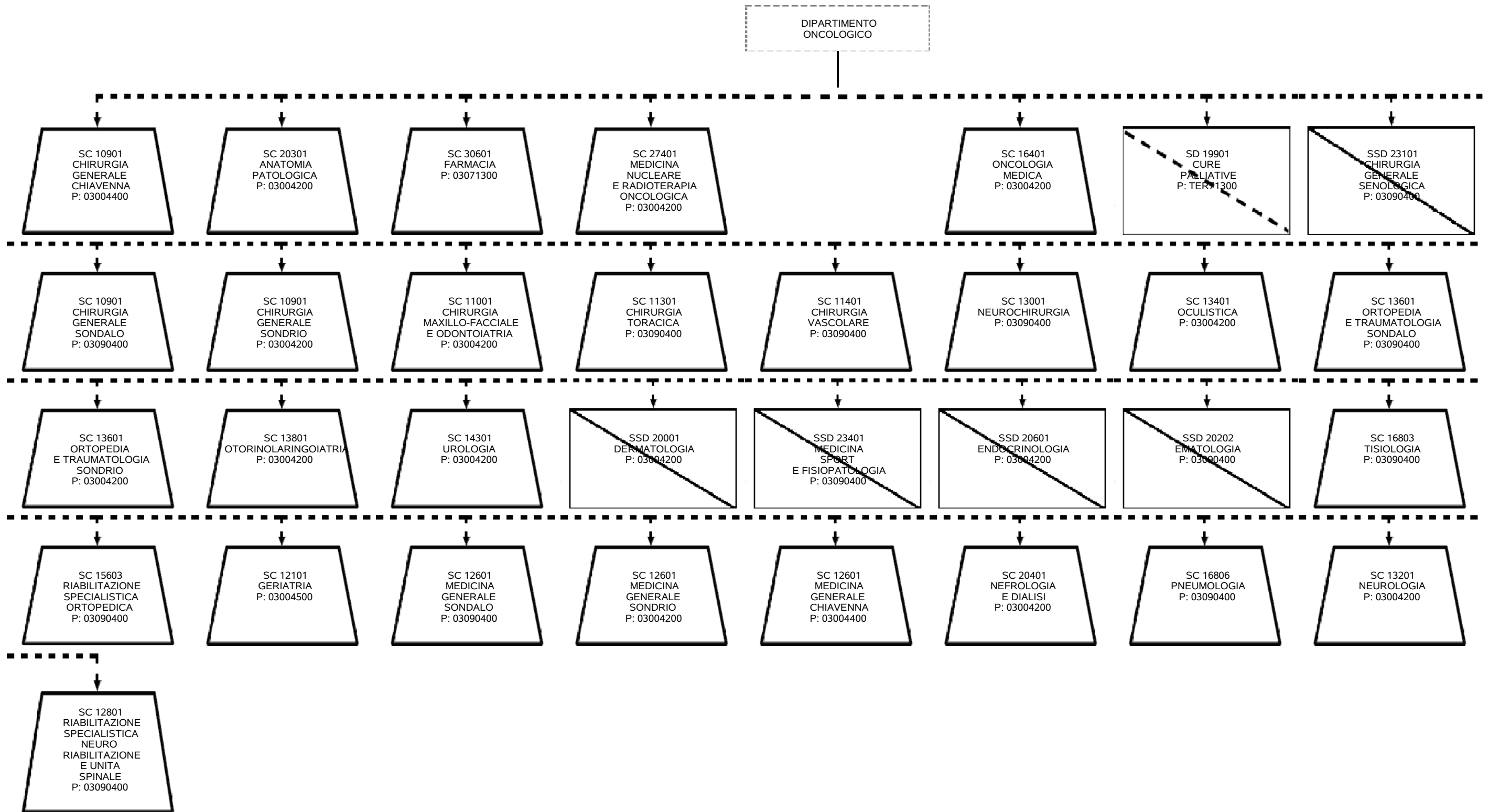


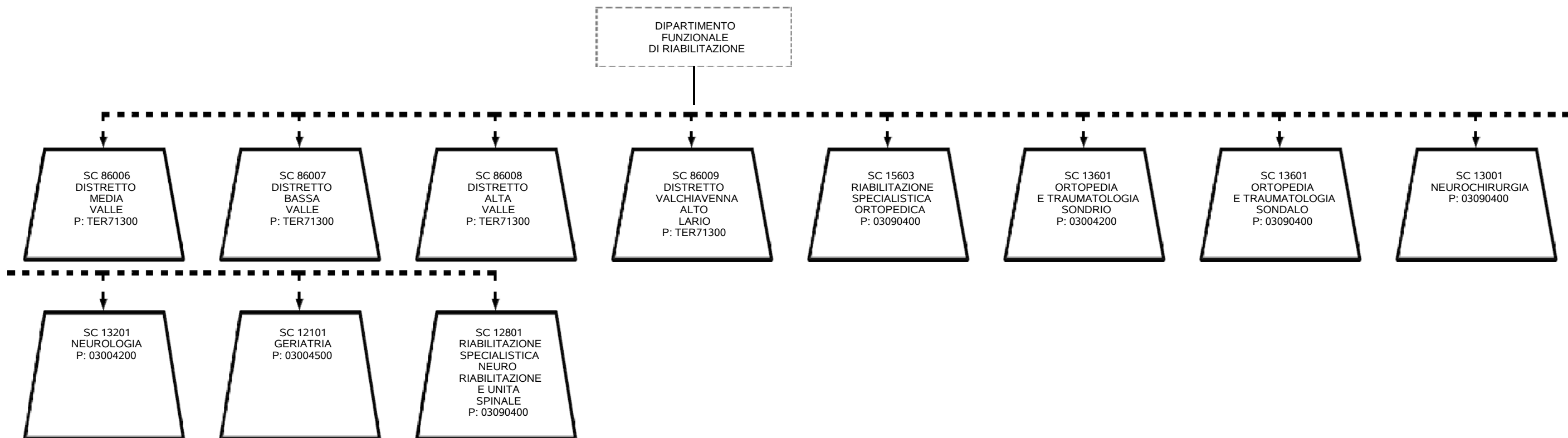


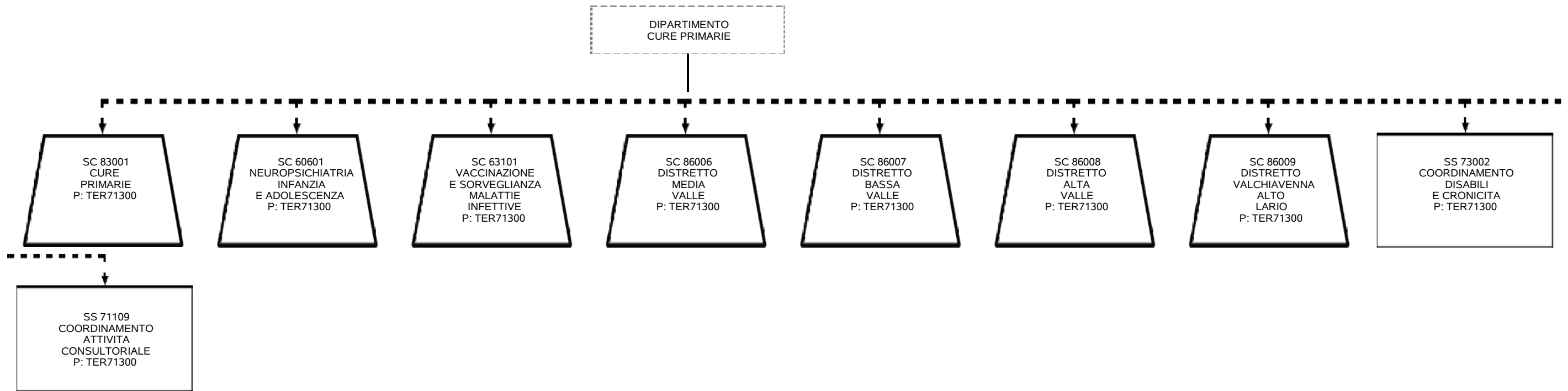


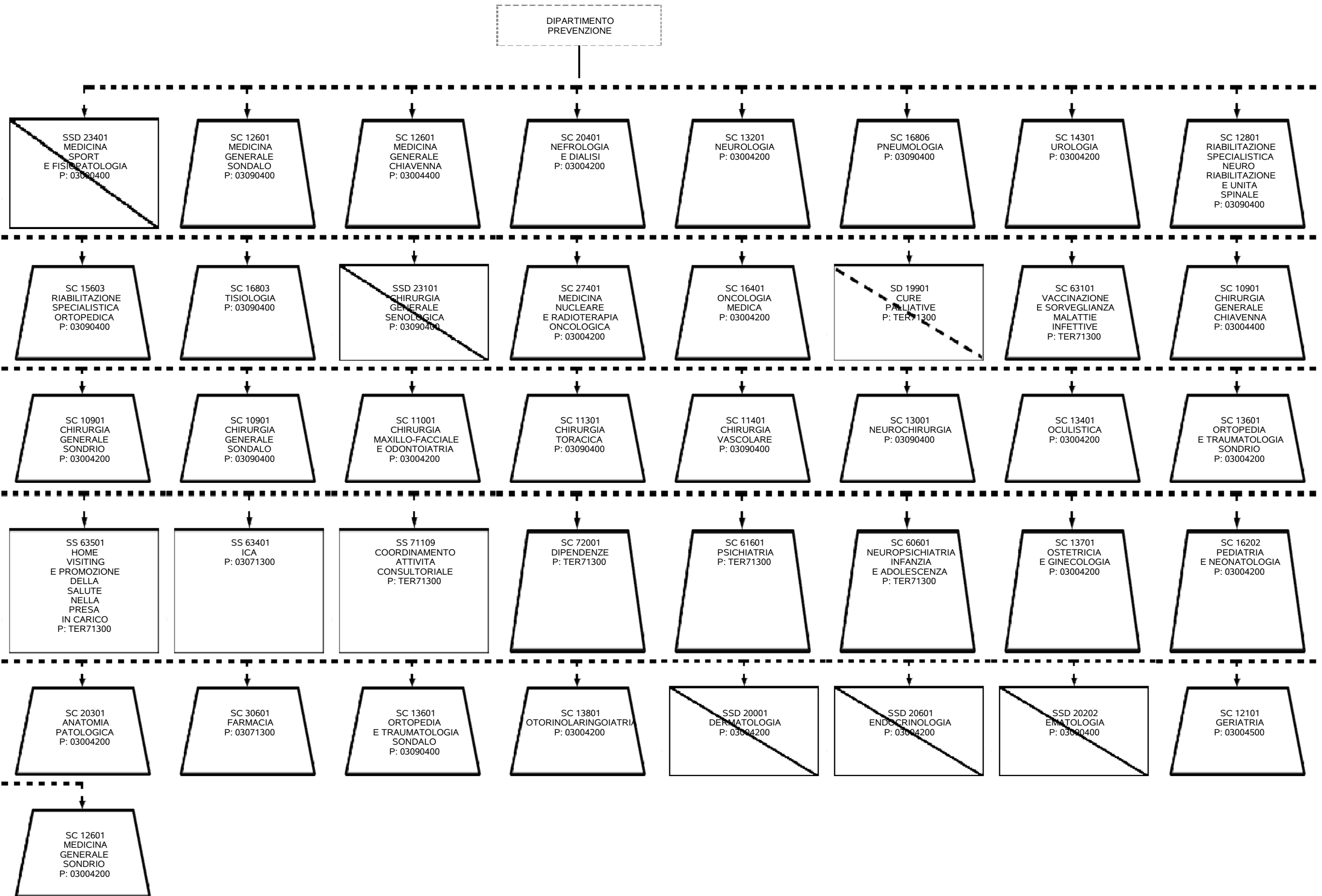












ORGANIGRAMMA PROPOSTO - 713 ASST DELLA VALTELLINA E DELL'ALTO LARIO - Direzione Sanitaria - Dipartimento Funzionale Interaziendale DIPARTIMENTO INTERAZIENDALE MEDICINA TRASFUSIONALE ED EMATOLOGIA (DMTE)

