

Organigramma Proposto

2022 - 2024

Aggiornamento 2024



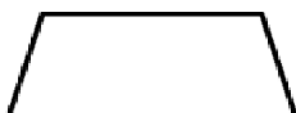
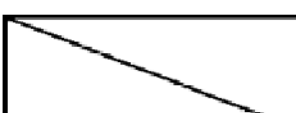
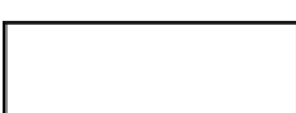
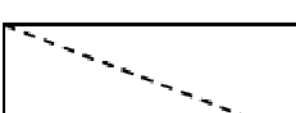
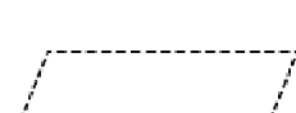
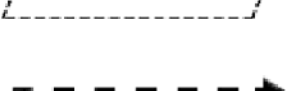
713 - ASST DELLA VALTELLINA E DELL'ALTO LARIO

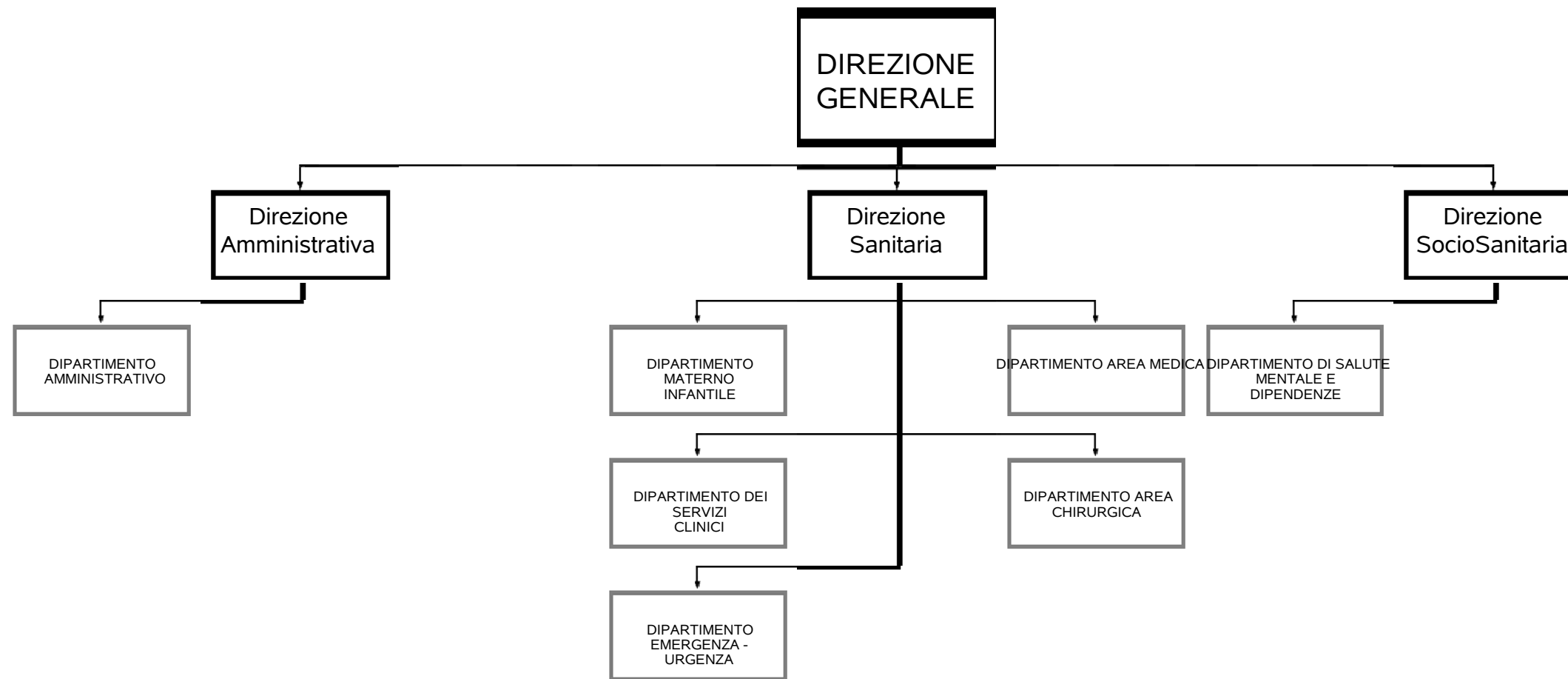
Sistema Socio Sanitario

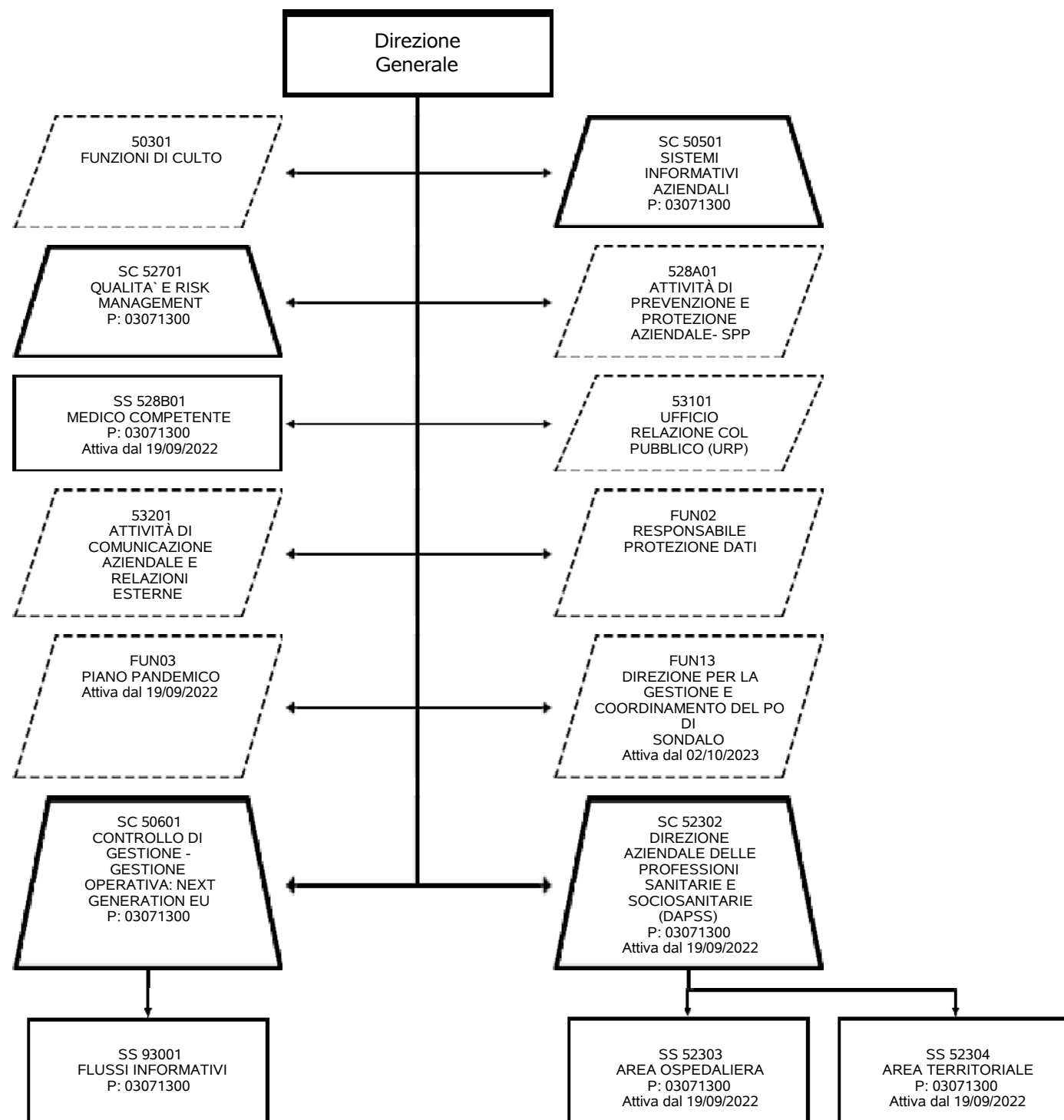


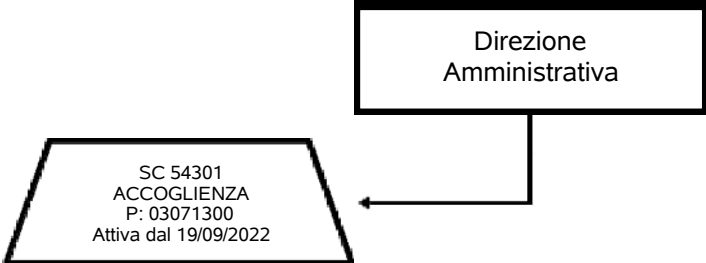
Regione
Lombardia

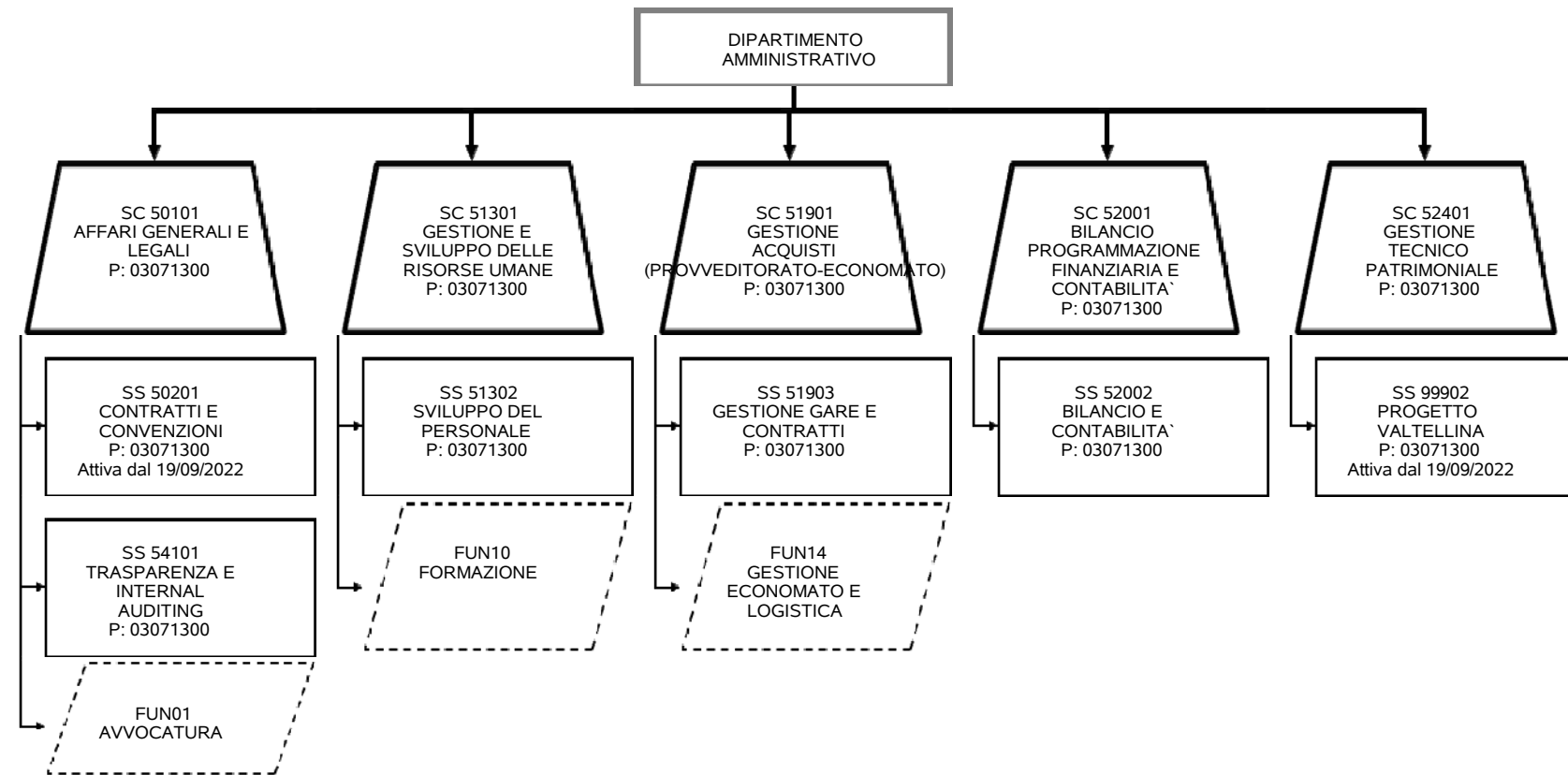
Legenda

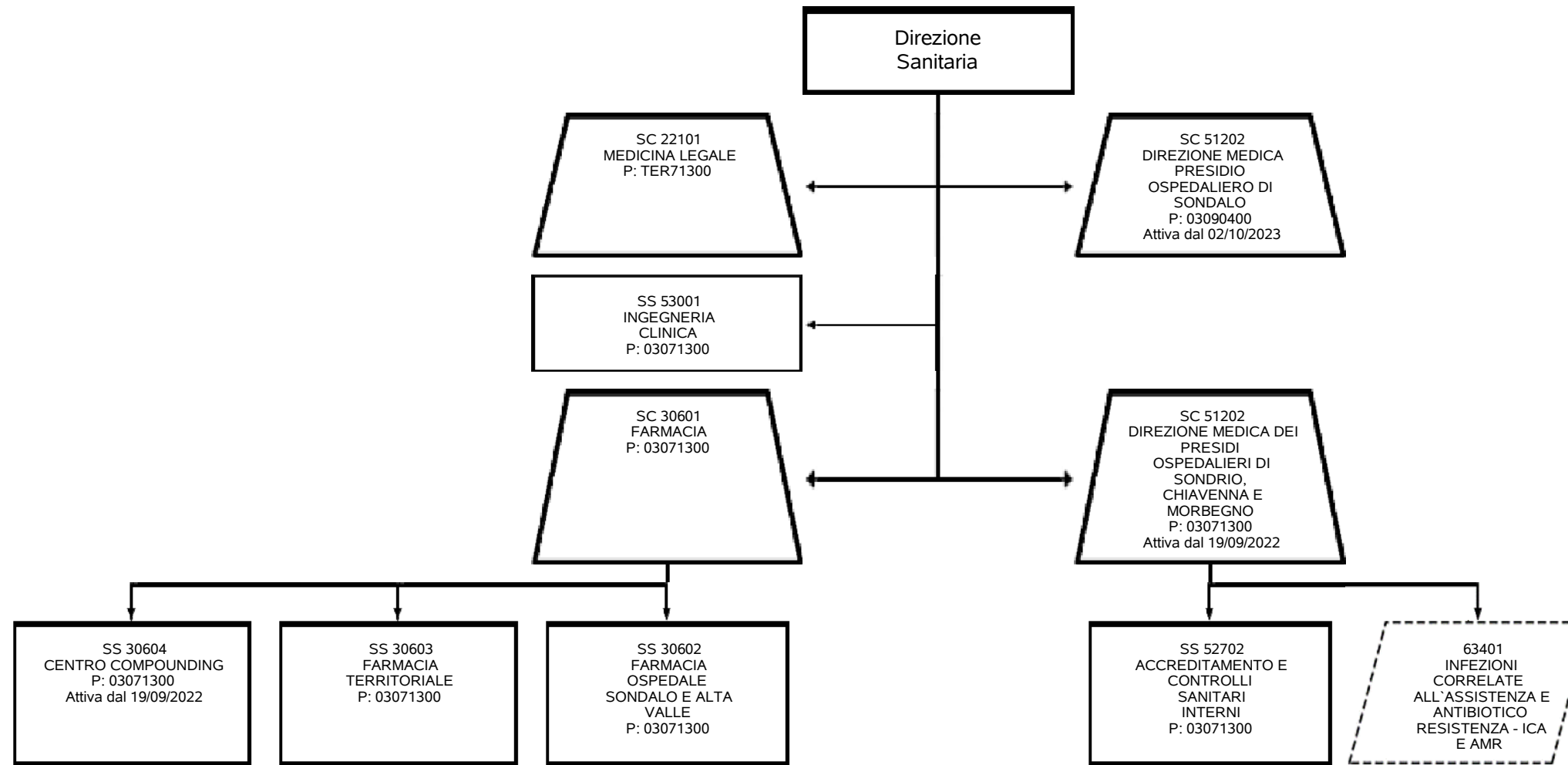
	Dipartimento Gestionale
	Dipartimento Funzionale
	SC – Struttura Complessa
	SSD – Struttura Semplice Dipartimentale
	SS – Struttura Semplice
	SD – Struttura Semplice Distrettuale
	Funzione
	Relazione Funzionale

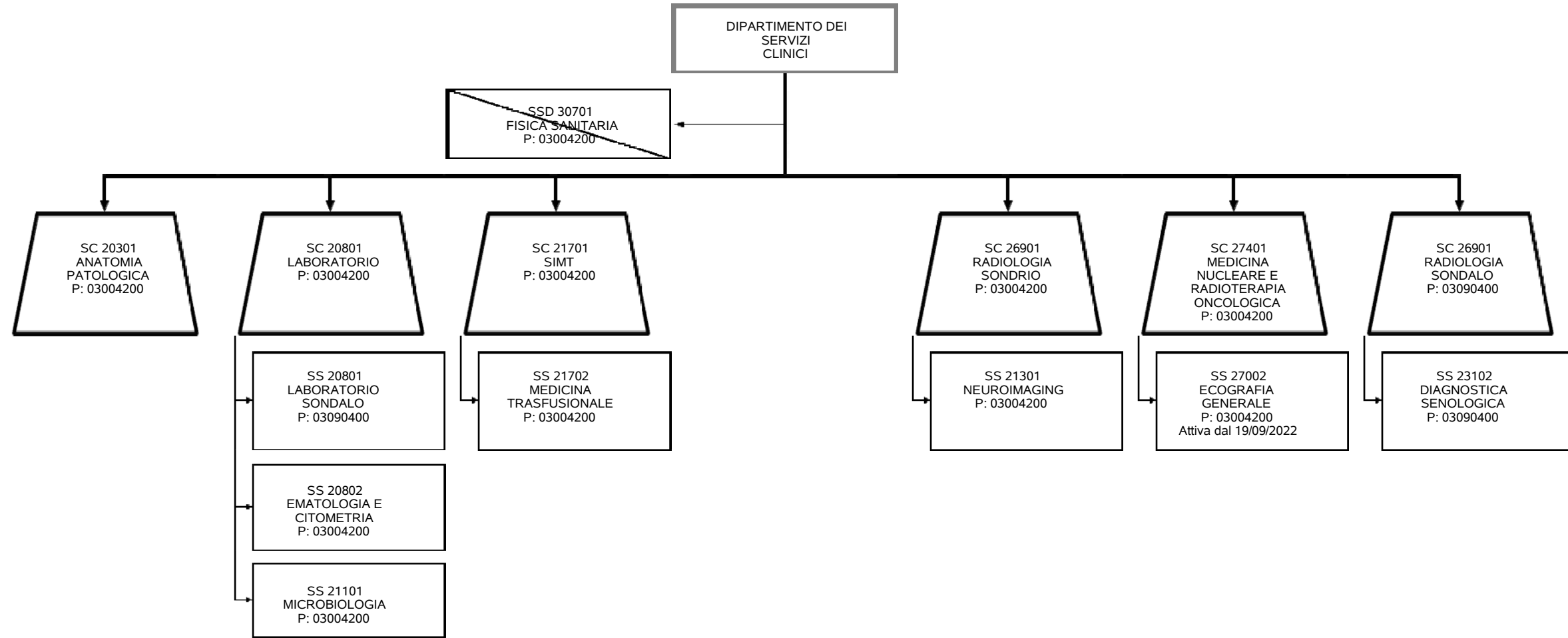


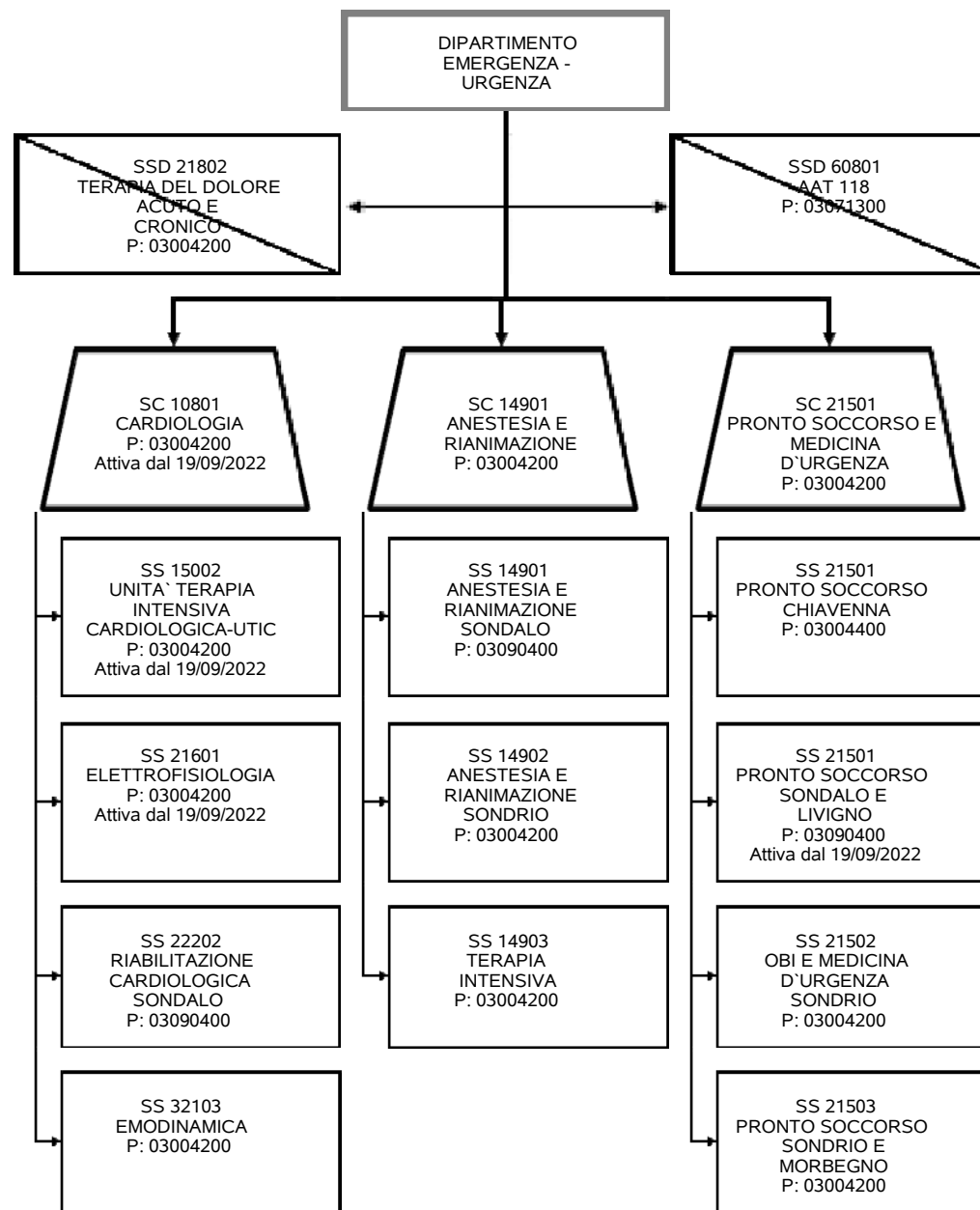


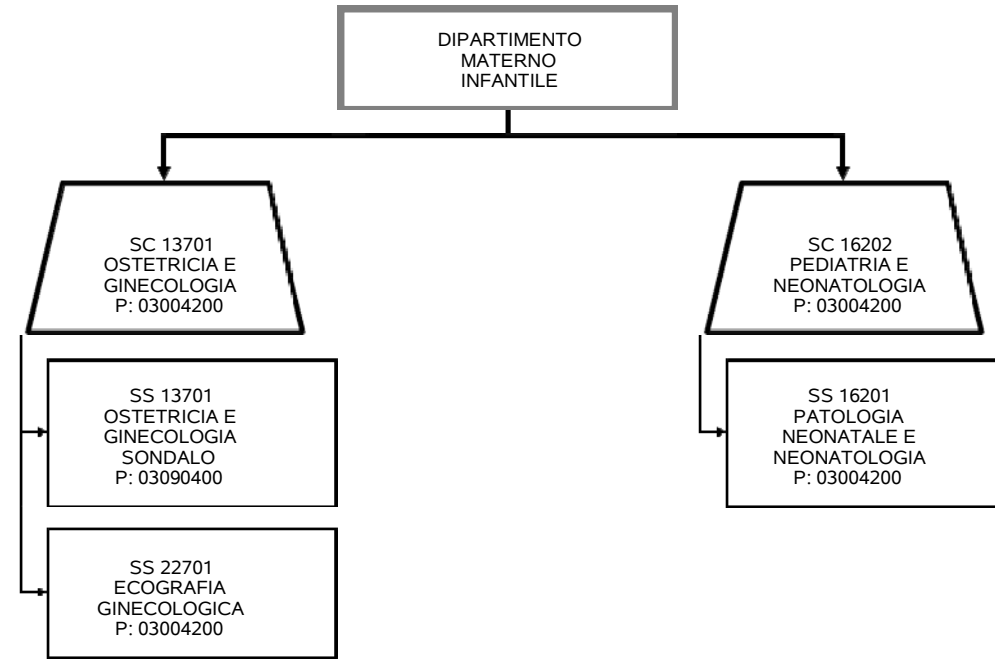


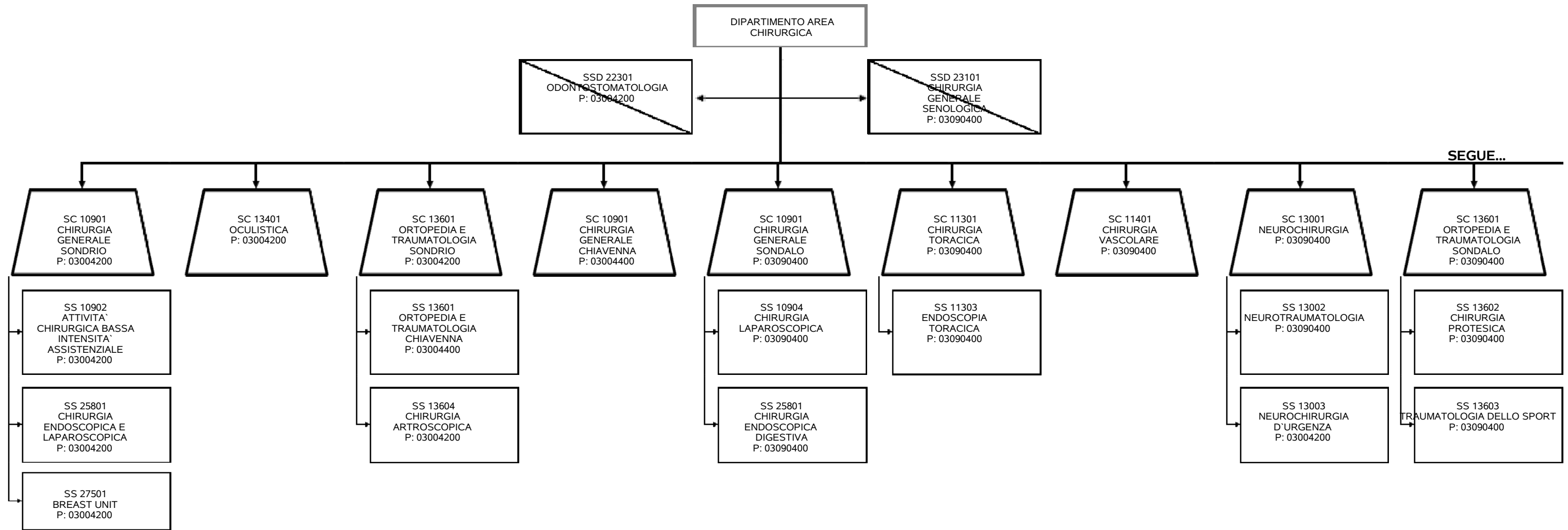


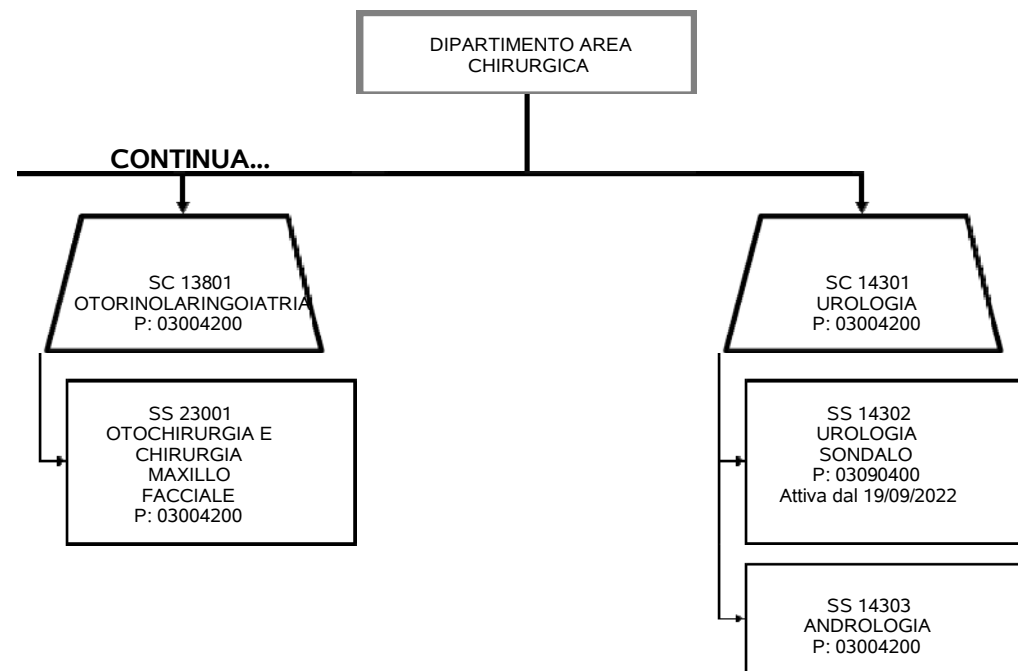


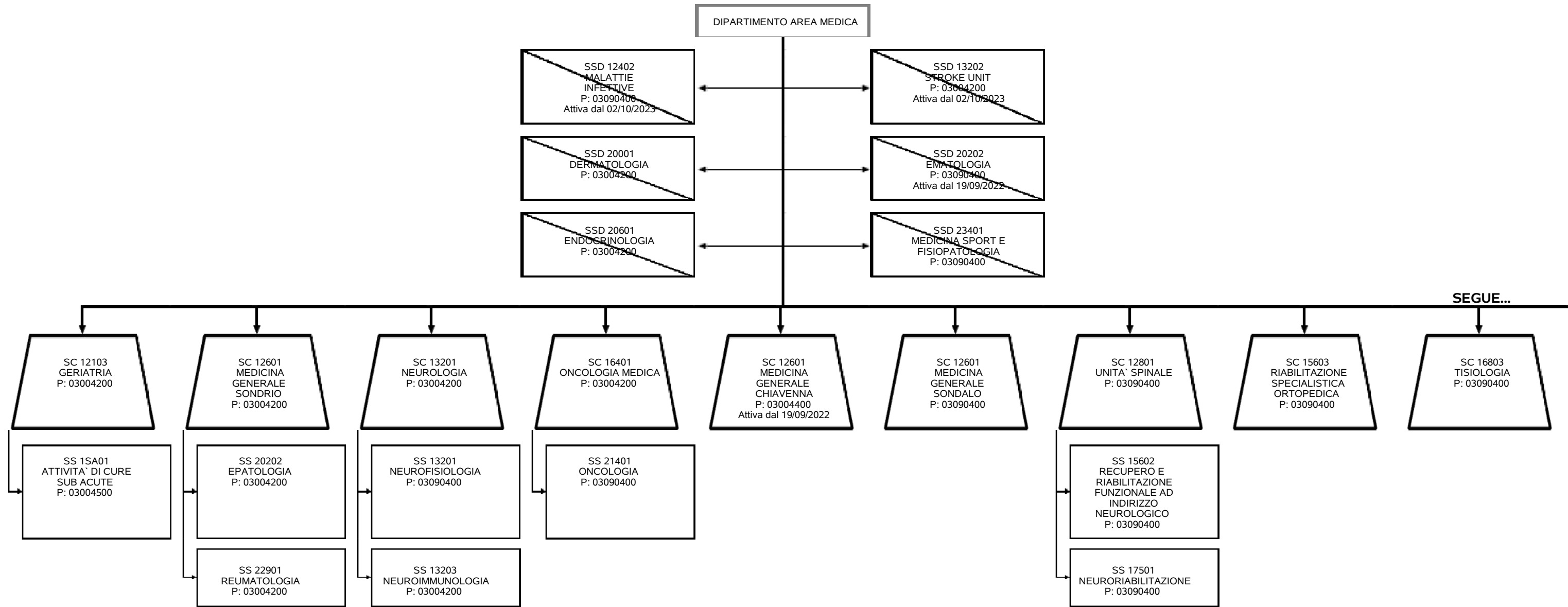


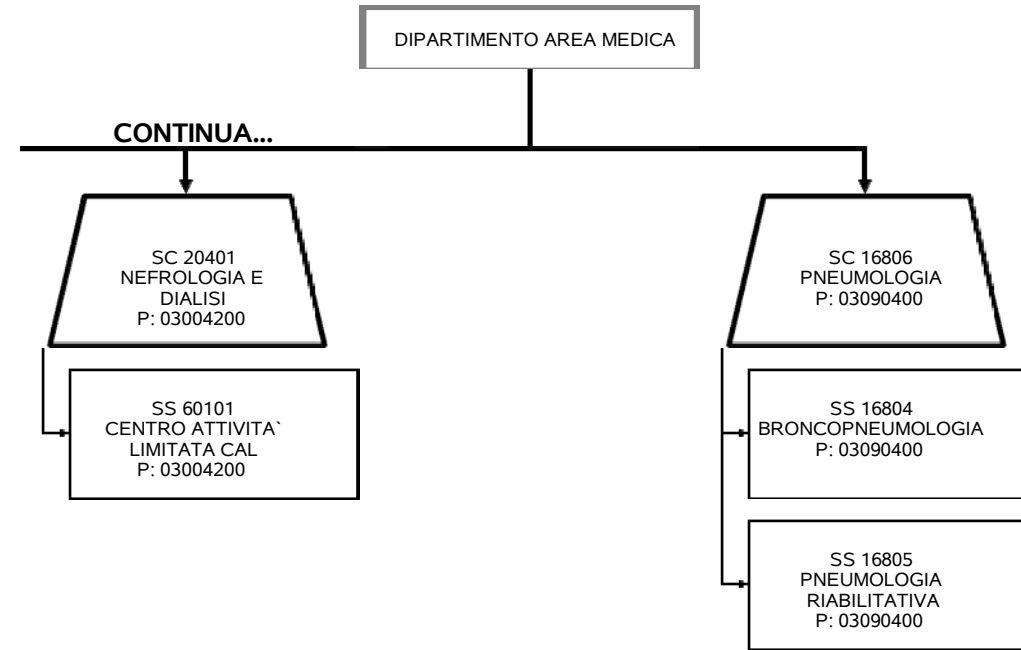


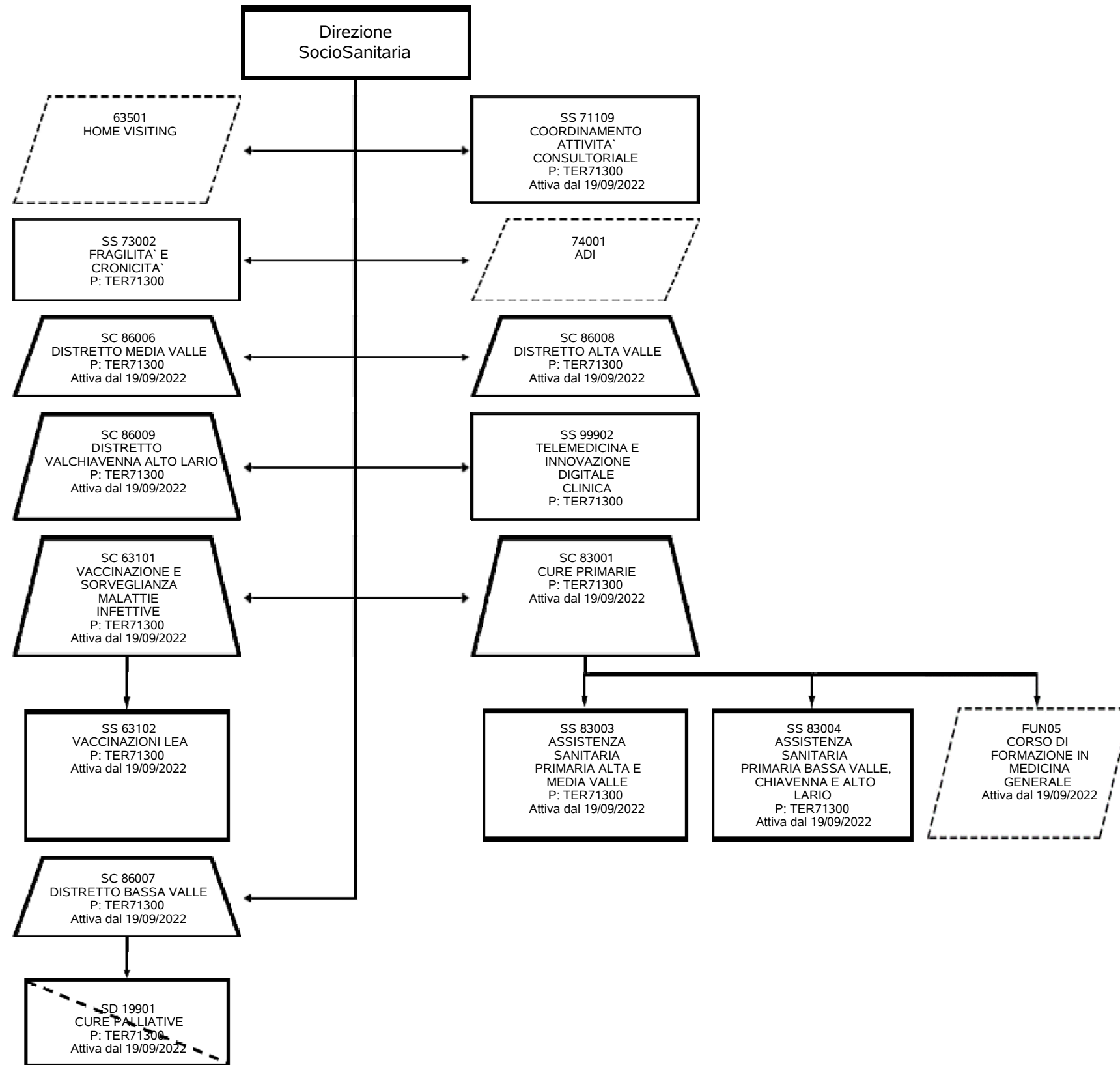




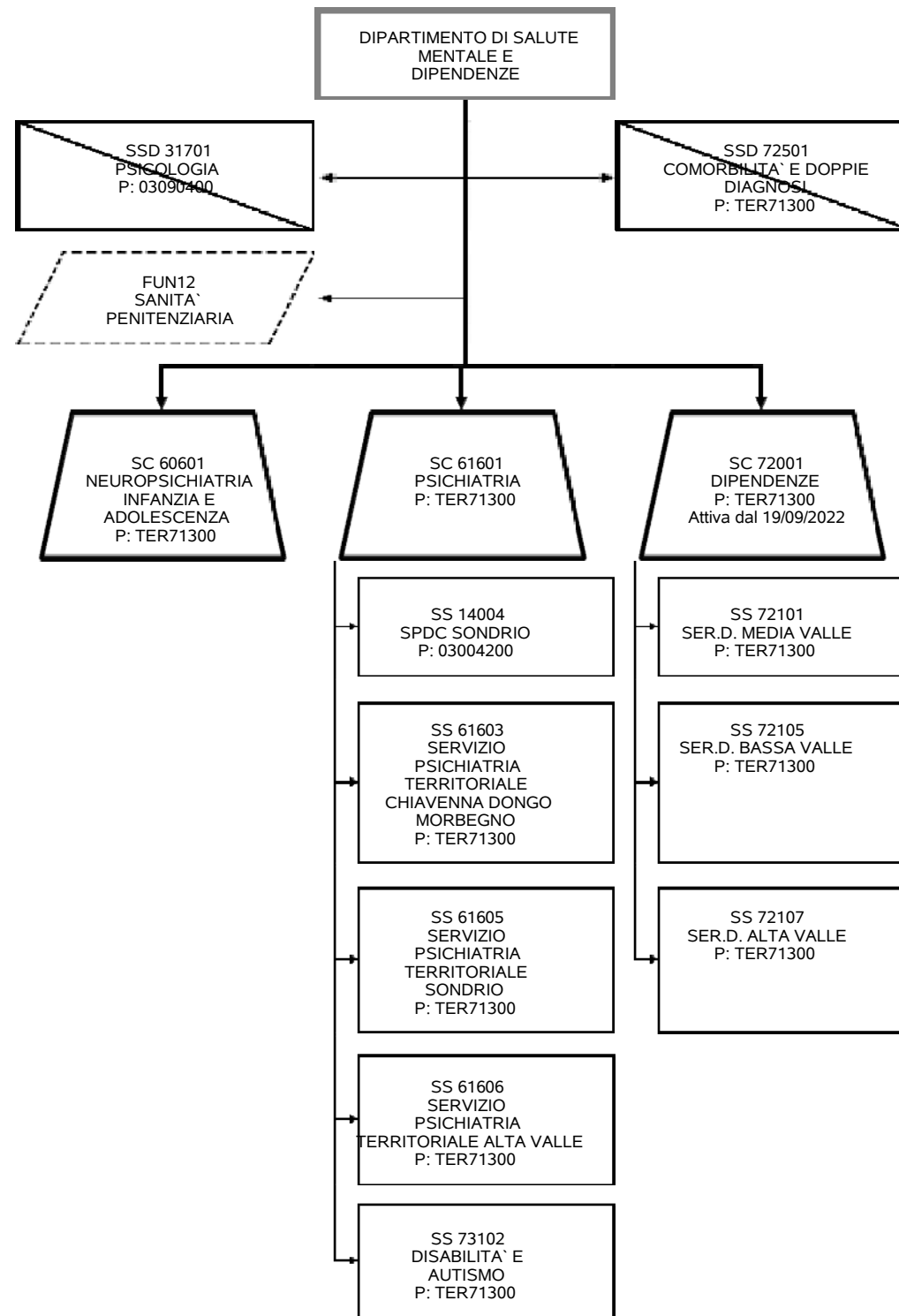


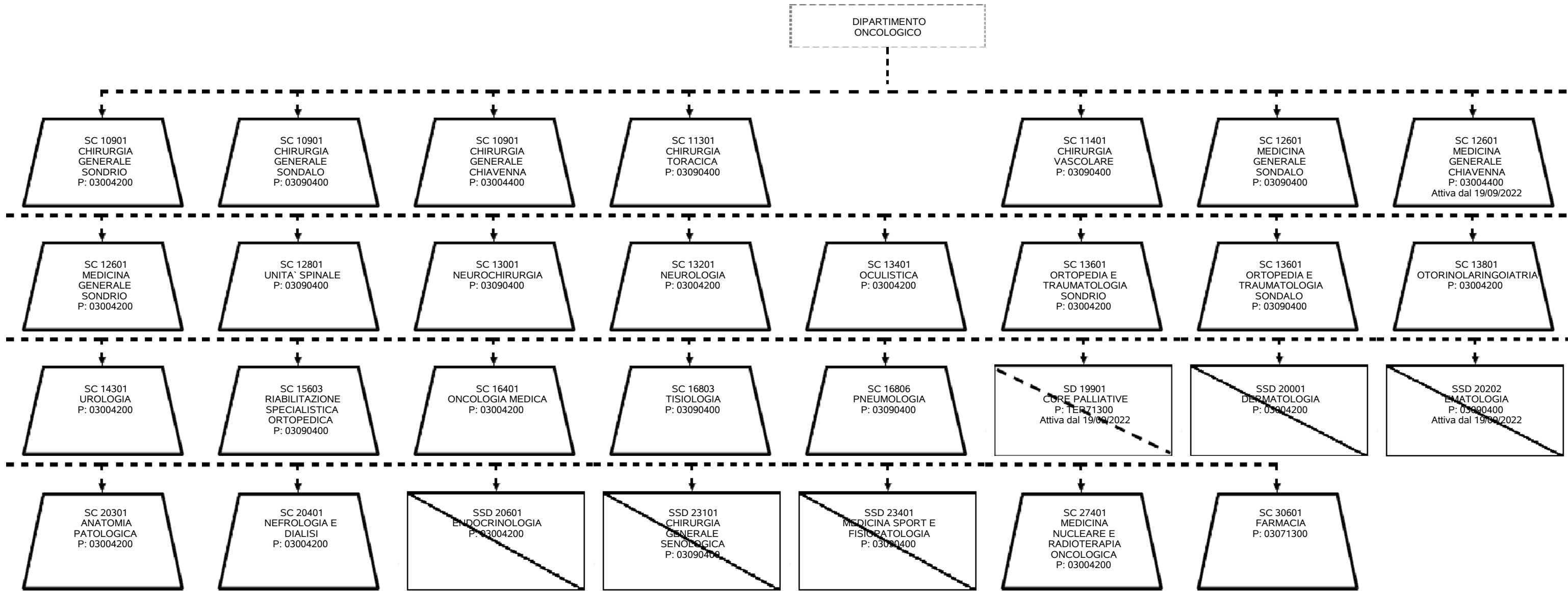


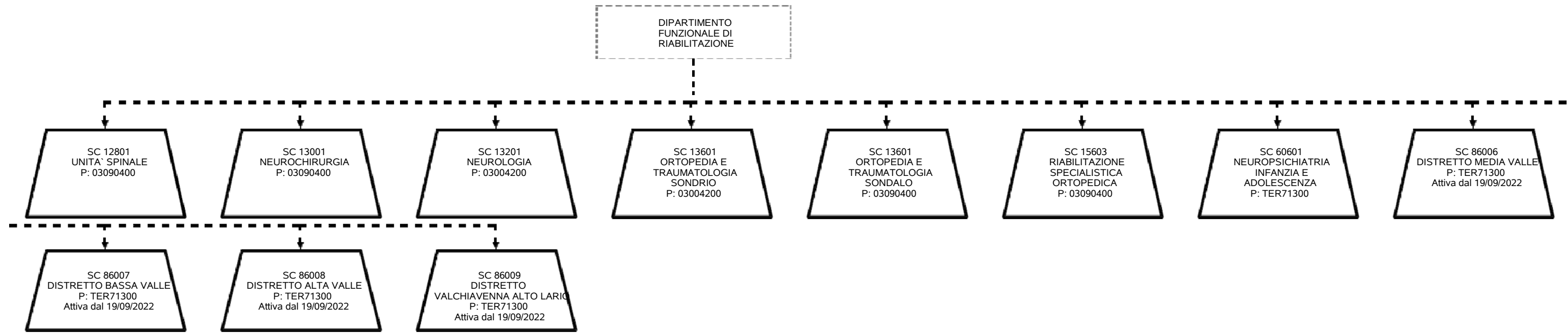


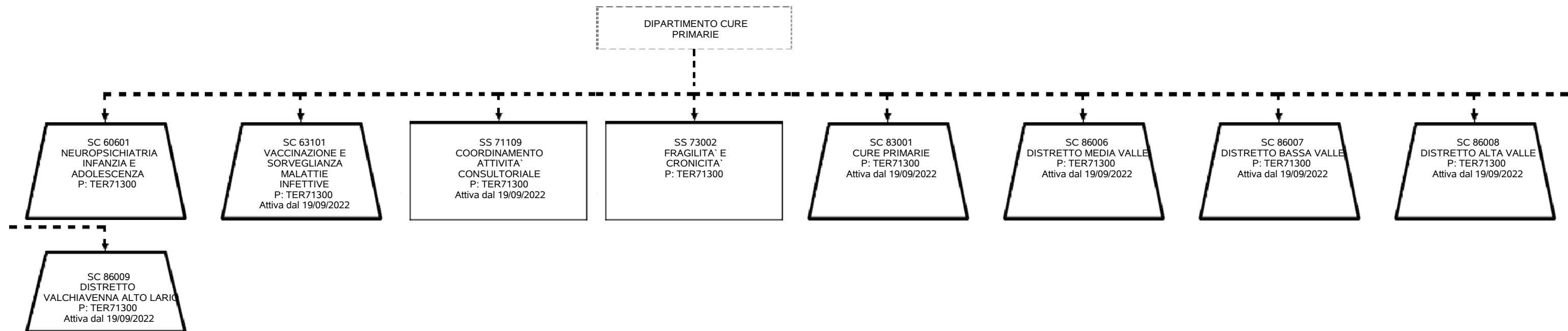


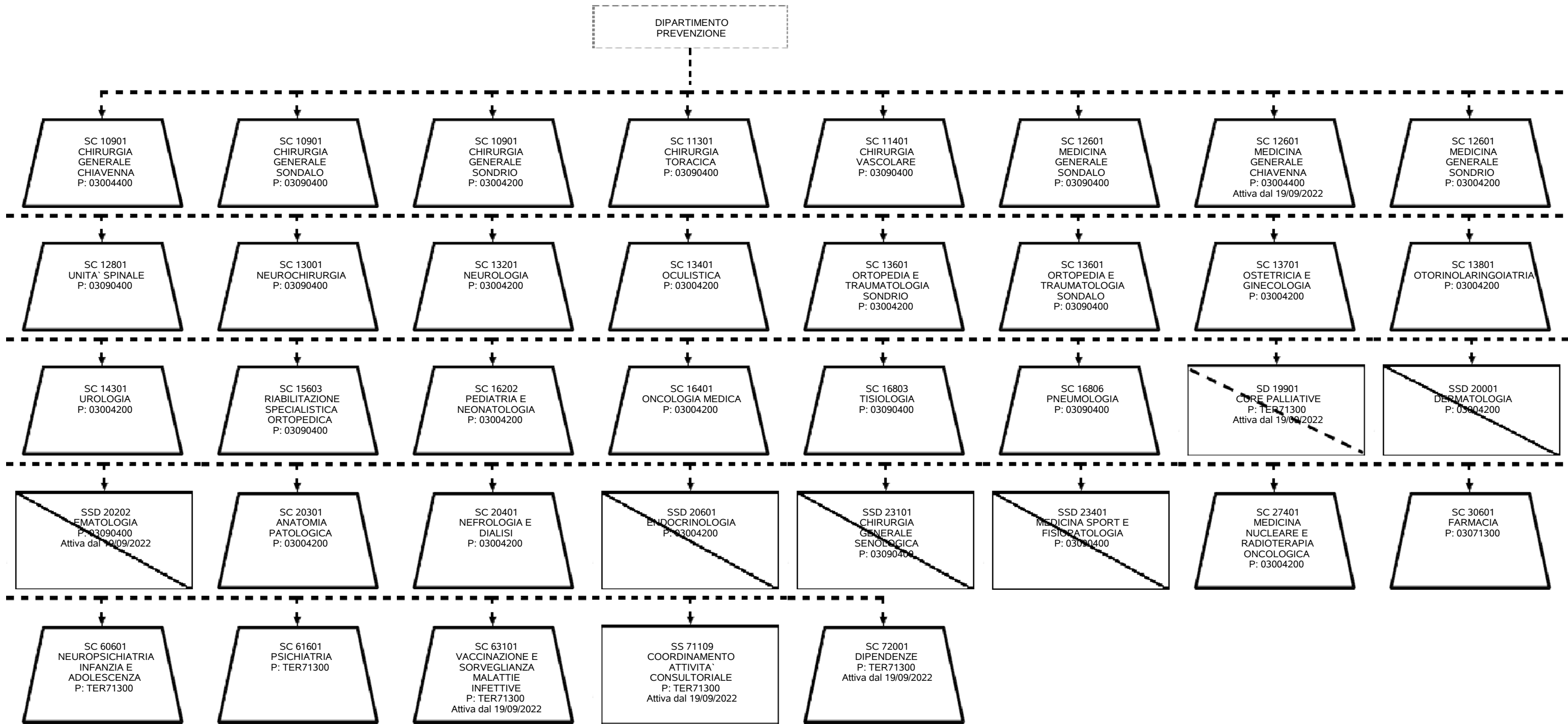
ORGANIGRAMMA PROPOSTO - 713 ASST DELLA VALTELLINA E DELL'ALTO LARIO - Direzione SocioSanitaria - DIPARTIMENTO DI SALUTE MENTALE E DIPENDENZE Staff del DIPARTIMENTO DI SALUTE MENTALE E DIPENDENZE











ORGANIGRAMMA PROPOSTO - 713 ASST DELLA VALTELLINA E DELL ALTO LARIO - Direzione Sanitaria - Dipartimento Funzionale Interaziendale DIPARTIMENTO INTERAZIENDALE MEDICINA TRASFUSIONALE ED EMATOLOGIA (DMTE)

